



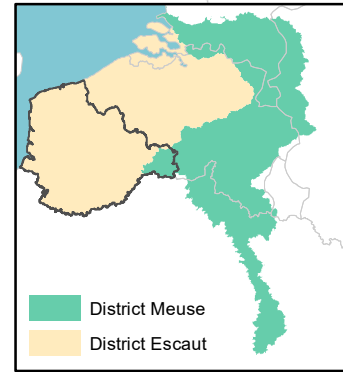
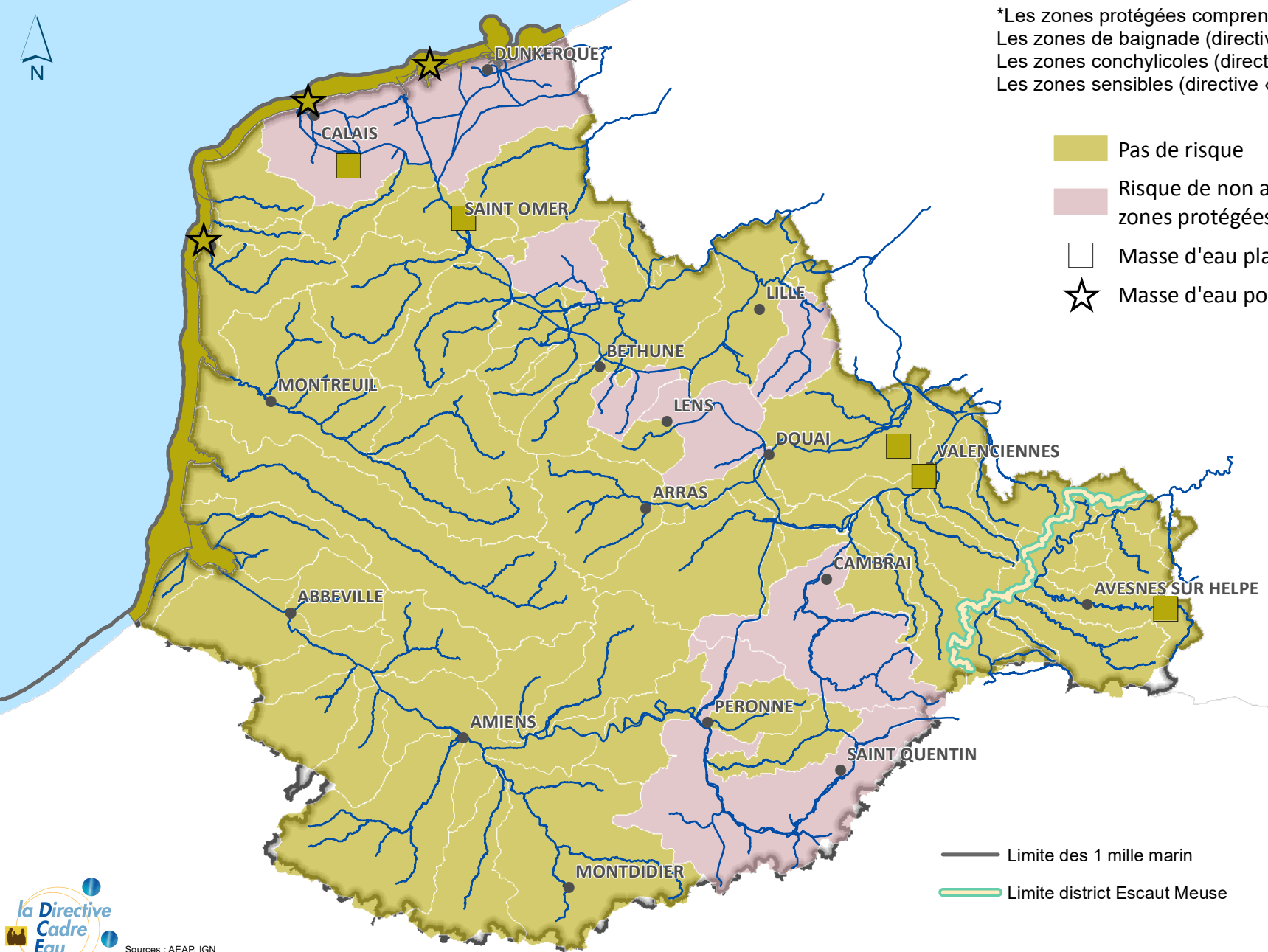




# Risque de non atteinte des objectifs zones protégées\* en 2027

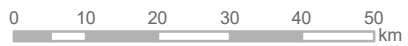


\*Les zones protégées comprennent :  
Les zones de baignade (directive « baignade »)  
Les zones conchylicoles (directives « conchylicoles »)  
Les zones sensibles (directive « eaux résiduaires urbaines »)

-  Pas de risque
-  Risque de non atteinte des objectifs zones protégées en 2027
-  Masse d'eau plan d'eau
-  Masse d'eau portuaire



-  Limite des 1 mille marin
-  Limite district Escaut Meuse



Sources : AEAP, IGN  
Agence de l'Eau Artois Picardie  
risque\_non\_atteinte\_zones\_protégées\_surf\_EDL2019  
M. Rymek - 06/12/2019